

Siddhartha Systematic Investment Scheme

(An open-ended equity scheme)

Scheme Objective: To deliver long-term capital appreciation through a diversified investment approach in equity securities of various market capitalizations.



INVESTMENT TEAM

Mr. Nirajan Karki
Head Research & Investment
Mr. Anirudhda Pokharel
Scheme Manager



FUND DETAILS

Authorized Fund Size 1,500,000,000
Existing Fund Size 1,212,770,669
Authorized Units 150,000,000
Existing Units 107,760,174



DATE OF ALLOTMENT

Index on allotment date 3004
SSIS Allotment Date 22nd July 2021



NET ASSET VALUE

Asset Under Management Rs 1,212,770,669
NAV per unit 11.25
(As on 30th Kartik, 2081)



QUANTITATIVE DATA

Standard Deviation:
Benchmark 31.67%
SSIS 19.81%
Fund Beta 0.63
Equity Beta 0.81



FEE INFO

Fund Management Fee 1.50%
Depository Fee 0.20%
Exit Load 1.5% within 1 year

TOP 20 EQUITY EXPOSURE

Company	% at NAV	Sector/Industry
SBI	7.0%	Commercial Banks
EBL	4.7%	Commercial Banks
ALICL	4.2%	Life Insurance
NIL	4.0%	Non Life Insurance
KSBBL	3.8%	Development Banks
PRIN	3.4%	Non Life Insurance
NLICL	3.1%	Life Insurance
CHDC	3.0%	Investment
SHINE	2.9%	Development Banks
SANIMA	2.8%	Commercial Banks
SALICO	2.6%	Non Life Insurance
MEN	2.6%	Hydro Power
LBBL	2.5%	Development Banks
SPIIL	2.5%	Non Life Insurance
SCB	2.3%	Commercial Banks
CBBL	2.1%	Microfinance
TAMOR	2.1%	Hydro Power
NMB	1.9%	Commercial Banks
NABIL	1.8%	Commercial Banks
SHIVM	1.7%	Manufacturing And Processing

Net Equity Exposure 78.1%
Fixed Deposit 0.8%
Bond & Debenture 3.5%
(As on 30th Kartik, 2081)

SECTOR WISE DETAILS

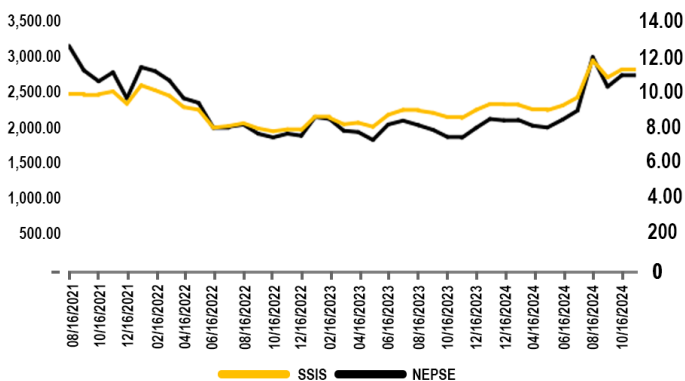
Sector	SSIS	Market
Commercial Banks	28.7%	27.0%
Development Banks	11.9%	4.7%
Finance	0.0%	2.8%
Microfinance	7.7%	9.0%
Non-Life Insurance	17.9%	5.8%
Life Insurance	12.8%	9.3%
Hotels And Tourism	0.4%	2.9%
Hydro Power	7.4%	15.8%
Others	2.3%	9.7%
Manufacturing And Processing	4.96%	5.4%
Investment	5.16%	7.7%
Mutual Fund	0.77%	0.0%

SIP PERFORMANCE

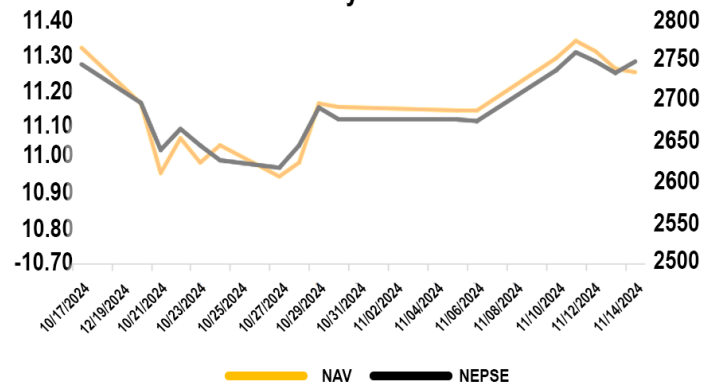
Period	SSIS	Benchmark
Since Inception	23.84%	24.19%
1 year (Trailing)	14.48%	21.08%

(Exit load has not been taken into consideration)

SSIS and NEPSE



Monthly NAV



* The performance and benchmark have been computed from the allotment date of SSIS to the present assuming Rs 1000 invested every month as per the georgian calendar. Standard deviation is the annualized deviation of both the scheme and the market since inception of the scheme.

(Past performance is not indicative of future performance and is not a guarantee of any future returns.)